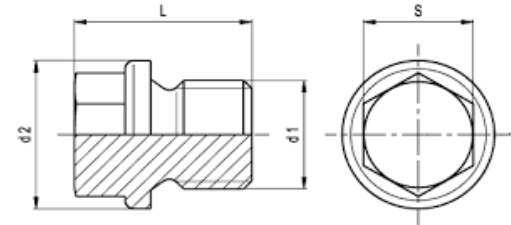
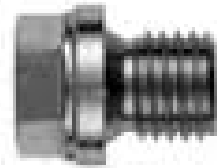


DIN 910 BSPP Hexagon Head Pipe Plugs



DIN 910 BSPP Hexagon Head Pipe Plugs												
Diameter-d	G 1/8"	G 1/4"	G 3/8"	G 1/2"	G 5/8"	G 3/4"	G 1"	G 1-1/4"	G 1-1/2"	G 1-3/4"	G 2"	
S-(m/m)	10	13	17	19	19	24	27	30	30	36	36	
L- (m/m)	17	21	21	26	26	30	32	33	33	40	40	
d2 - (m/m)	14	18	22	26	28	32	39	49	55	60	68	

Material	Finish	Diameter
<i>Stainless Steel</i>	<i>A2 & A4</i>	<i>1/8" - 2"</i>
<i>Brass</i>	<i>Self Colour</i>	<i>1/4"-3/8"-1/2"-3/4" & 1"</i>

INFORMATION AND DRAWINGS PROVIDED ARE FOR REFERENCE ONLY